

ASX and Media Release

Community information day for Port Pirie residents

On 25 August 2010, WPG Resources Ltd (ASX:WPG) announced it would be hosting an information day for the benefit of the Port Pirie community on Saturday 4 September 2010.

Attached are the documents and posters to be distributed and viewed at the information day.

3 September 2010

Further Information

For further information please contact WPG's Executive Chairman Bob Duffin, on (02) 9247 3232 or 0412 234 684 or Martin Jacobsen, Chief Operating Officer, on (02) 9247 3232 or 0414 340 630.



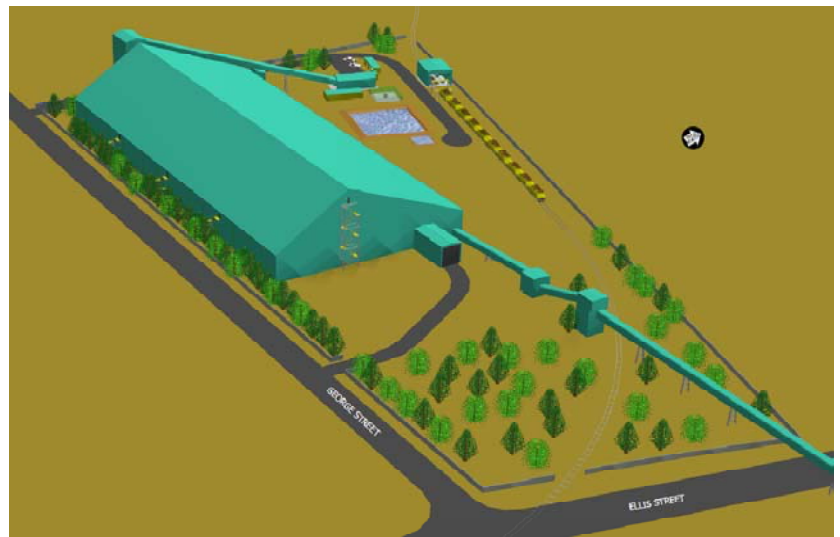
WPG
Resources Ltd

ABN 51 109 426 502
Level 9, Kyle House
27-31 Macquarie Place
Sydney NSW 2000
Telephone (+612) 9251 1044
Facsimile (+612) 9247 3434
info@westernplainsresources.com.au
www.westernplainsresources.com.au

PECULIAR KNOB DIRECT SHIPPING ORE PROJECT – PORT PIRIE ORE STORAGE AND MINERALS EXPORTING FACILITY

Project Overview

- Western Plains Resources (WPG) is an Australian ASX-listed mineral resources company with advanced iron ore projects in South Australia.
- WPG's flagship project at Peculiar Knob is scheduled to commence production in late 2011 and produce in excess of three million tonnes of high grade iron ore annually.
- The proposed state-of-the-art infrastructure to be built at Port Pirie will enable WPG to transport, store and export iron ore from Peculiar Knob to overseas markets.
- The proposed Port Pirie facility represents a >\$50 million investment by WPG, which will provide significant economic and community benefits to the region including improved infrastructure, approximately 210 construction jobs, 150 direct and 85 indirect jobs related to project operations.
- Construction of the proposed infrastructure at Port Pirie is anticipated to commence in March 2011 and be completed by November 2011.
- WPG is currently preparing a planning development application for the project, which will involve detailed environmental studies and recommendations.
- WPG is committed to working with government, regulatory bodies and the local community to build infrastructure at Port Pirie that meets stringent environmental standards.
- WPG will keep the community informed of project progress through the local media, the company's website (www.westernplainsresources.com.au) and community information days.



Artists Impression of Ore Storage and Minerals Exporting Facility

Frequently Asked Questions

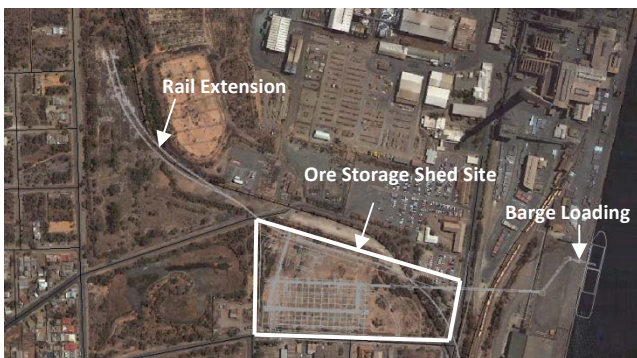
Planning Development Application

Western Plains Resources (WPG) is preparing a planning development application for its proposed new facility at Port Pirie, which will enable storage and export of iron ore from its flagship Peculiar Knob project.

What's involved?

The proposal involves construction of facilities at Port Pirie for receipt, storage and shipment of iron ore to enable export of ± 3.3 mt of iron ore annually. It includes construction of a storage shed, rail extension, rail un-loading and barge loading facilities.

The ore storage shed will be constructed on a 4.5ha site, the old Shell site, adjacent to George Street in Port Pirie.



Aerial View of Site Location

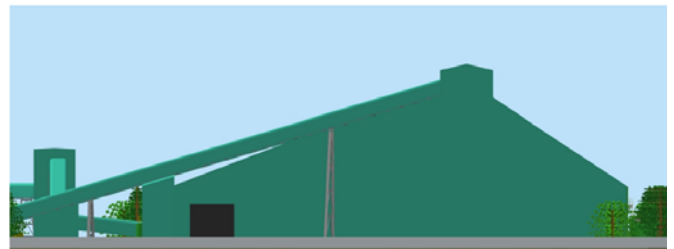
What activities are proposed to take place at the new facility?

Iron ore will be unloaded from trains and stored in the shed, then transferred along an enclosed conveyor system to barges waiting at the dock.

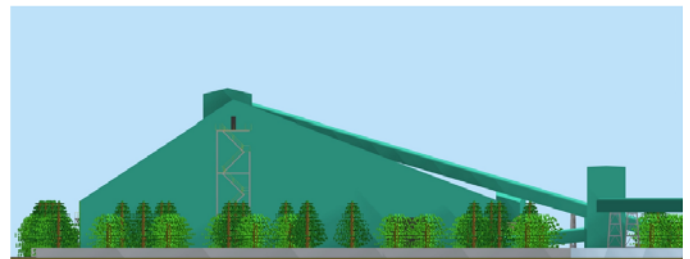
Barges will then ship the iron ore to Capesize vessels waiting in Spencer Gulf.

What will the new facility look like?

Detailed design of the facility has yet to be undertaken. The building is expected to be 27m high - about the height of a three-storey building and be covered in Colorbond sheeting or similar so that it blends in with the surroundings.



Artists Impression of the Storage Facility – View from West



Artists Impression of the Storage Facility – View from East

Landscaping will also be undertaken on the site to enhance the appearance of the structure.

Why Port Pirie?

The Port Pirie site was chosen due to the existing rail access to a wharf suitable for transhipment.

Alternative port sites investigated included Port Bonython, Whyalla and Port Adelaide. The Port Bonython option will not be in operation within WPG's required timeframe. The Whyalla option is not available to third party users. The Port

Adelaide site was not economically viable due to congestion and distance from the mine.

How is the proposal being assessed?

The project will require approval under the Development Act 1993 (SA) and other state and federal laws.

How will the proposed facility impact on traffic in Port Pirie?

Six return train trips to Port Pirie will be scheduled weekly, requiring crossing of Ellen Street in order to access the port area.

To minimise impacts on local traffic, the 1800m long train will be broken into three trains of 600m, before these are shunted across Ellen Street to the port.

What are the benefits to the community?

Over \$50 million will be invested in construction of the new facilities, which will significantly benefit the local economy through the creation of approximately 150 direct and 85 indirect jobs linked to port operations. The project will also create 210 regional jobs during the construction period. This will inject an estimated \$23 million in wages and income into Port Pirie per annum.

Project investment in town infrastructure (rail, roads and wharf facilities) will open the town up to new economic opportunities.

In addition, skills and training for the project workforce can flow through to other industries and sectors in the local and regional area.

Will there be any environmental impacts?

In line with requirements set down by the Environment Protection Authority (EPA), studies are currently being undertaken to identify any potential issues.

WPG will take every precaution to ensure stringent environmental standards are met in the design, construction and operation of the facilities.

The design of the facility will enable the harvesting of rainwater from the building to limit the use of reticulated water.

What are the timelines for the planning process?

Engineering and project delivery firm Sinclair Knight Merz is due to deliver a planning application to Western Plains by September 2010. This will then be provided to government for assessment.

It is expected that the development approval process will take between 3-6 months.

What is the lifespan of the Peculiar Knob project?

Western Plains anticipates extraction of iron ore resource at Peculiar Knob for the next 5-10 years.

Will there be any dust from the proposed facility?

Dust suppression measures will be taken at every step of the process to prevent dust from escaping into the surrounding environment. This is a key focus of the engineering design. All movement of the iron ore will occur within enclosed structures with fume and dust collection systems in place.

Air quality specialists are also reviewing the proposed design and will subsequently prepare appropriate environmental management plans.

What will the noise impacts be?

There will be minimal noise associated with the proposed facility as unloading, storage and ship loading will all occur within enclosed structures.

A detailed noise assessment is being undertaken as part of the development approval.

Will the proposed facility impact on the marine environment?

Every precaution will be taken to ensure the marine environment is not impacted by the project.

A background study of marine ecology and marine water quality is being undertaken as part of the development approval process to identify and manage any environmental factors.

Will the new facility have any impacts on soil or water quality?

A soil and water assessment is being undertaken to understand existing site contamination from previous uses and identify and manage impacts on future soil and water quality. Stringent environmental standards will be applied in the excavation, cartage and disposal of any contaminated soil that is extracted from the site.

Will there be any removal of vegetation or trees?

At this stage it is not known whether any existing vegetation will need to be removed. Appropriate revegetation and landscaping will be undertaken following construction if this is the case.

How long will construction take?

The construction of the proposed facilities at Port Pirie is expected to take seven months.

What will construction of the proposed facility involve?

Construction of the rail extension and upgrade will require excavation to create the train tip pocket, and installation of piles for the shed structure. The storage building and conveyance equipment will be constructed from pre-fabricated materials, and erected by crane on site.

There may be some temporary congestion of local roads due to the transport of materials and movement of cranes, and also noise associated with construction. WPG will work with the community and construction crew to ensure that any impacts due to construction works are kept to an absolute minimum. This will include strict adherence to noise control measures, traffic management and limited working hours on site.

Where can I get more information?

To find out more about the Peculiar Knob direct shipping ore project visit

www.westernplainsresources.com.au.

For project information enquiries contact:
Larissa Brown: Ph (02) 9251 1044



WESTERN PLAINS RESOURCES PORT PIRIE INFRASTRUCTURE

ABOUT THE PROJECT

WHAT IS HAPPENING?

Western Plains Resources (WPG) is preparing a planning development application for its proposed new facility at Port Pirie which will enable storage and export of iron ore from its flagship Peculiar Knob project. It includes construction of a storage shed, rail extension, rail un-loading and barge loading facilities.

WHERE IS THE SITE?

The ore storage shed will be constructed on the old Shell site, adjacent to George Street in Port Pirie. The site is shown on the right.

WHAT WILL THE NEW FACILITY LOOK LIKE?

While detailed design of the facility has yet to be undertaken, the shed is expected to be 27 metres high – about the height of a three-storey building – and be covered in Colorbond sheeting or similar so that it blends in with the surroundings.

WHAT ACTIVITIES ARE PROPOSED TO TAKE PLACE AT THE NEW FACILITY?

Iron ore will be unloaded and stored in the shed, then transferred along an enclosed conveyor system to barges waiting at the dock. Barges will then ship the iron ore to Capesize vessels waiting in Spencer Gulf.

WHY PORT PIRIE?

The Port Pirie site was chosen due to the existing rail access to a wharf suitable for transhipment.

Alternative port sites investigated included Port Bonython, Port Augusta, Whyalla and Port Adelaide. The Port Bonython option will not be in operation within WPG's required timeframe. The Whyalla option is not available to third party users. The Port Adelaide site was not economically viable due to congestion and distance from the mine.

CAN I SPEAK TO SOMEONE ABOUT THIS PROJECT AND PROVIDE SOME INPUT?

Yes. WPG is committed to ensuring an open consultation process and is actively seeking input from the local community into the various aspects of the project. You can contact us on (02) 92511044.

To find out more about the Peculiar Knob direct shipping ore project, visit www.westernplainsresources.com.au.



ARTIST IMPRESSION – AERIAL VIEW OF THE SITE



PROJECT SITE



ARTIST IMPRESSION – VIEW FROM INTERSECTION OF GEORGE AND ELLEN STREET



WESTERN PLAINS RESOURCES PORT PIRIE INFRASTRUCTURE

COMMUNITY BENEFIT AND TIMELINE

The proposed state-of-the-art infrastructure to be built at Port Pirie will enable WPG to transport, store and export iron ore from Peculiar Knob to overseas markets.



Over \$50 million will be invested in construction of the new facilities. This will significantly benefit the local economy through the creation of approximately 150 direct and 85 indirect jobs linked to port operations.

An independent economic assessment has determined that the project will also create 210 regional jobs during the construction period. Overall, this will inject an estimated \$23 million in wages and income into Port Pirie per annum.

Project investment in town infrastructure (rail, roads and wharf facilities) will open the town up to new economic opportunities. In addition, skills and training for the project workforce can flow through to other industries and sectors in the local and regional area.

TIMELINE

There are six phases for the project. They are:

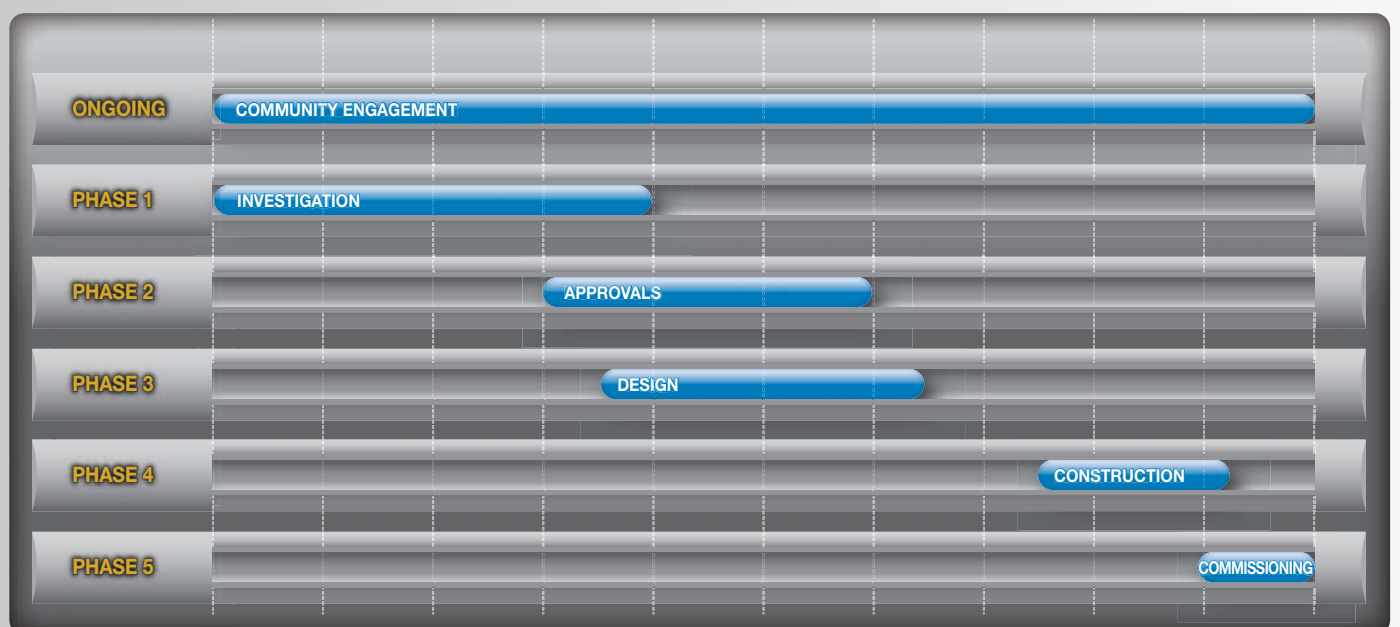
- Community engagement
- Investigation
- Approvals
- Design
- Construction
- Commissioning

All projects such as this must comply with a variety of local, State and/or Federal Government rules and requirements. Whilst the construction phase of a project is the most visible, it is often the investigations and approval phases that are the longest parts of a project.

Consultation with stakeholders including the community, councils, businesses and government departments occurs during every phase of the project.

The planning application will be completed for submission for government assessment by September 2010. It is expected that the development approval process will take between 3-6 months, with construction to commence – subject to approval – in March 2011 and finish in November 2011. Western Plains anticipates extraction of iron ore resource at Peculiar Knob for the next 5-10 years.

PLANNING AND CONSULTATION PROCESS

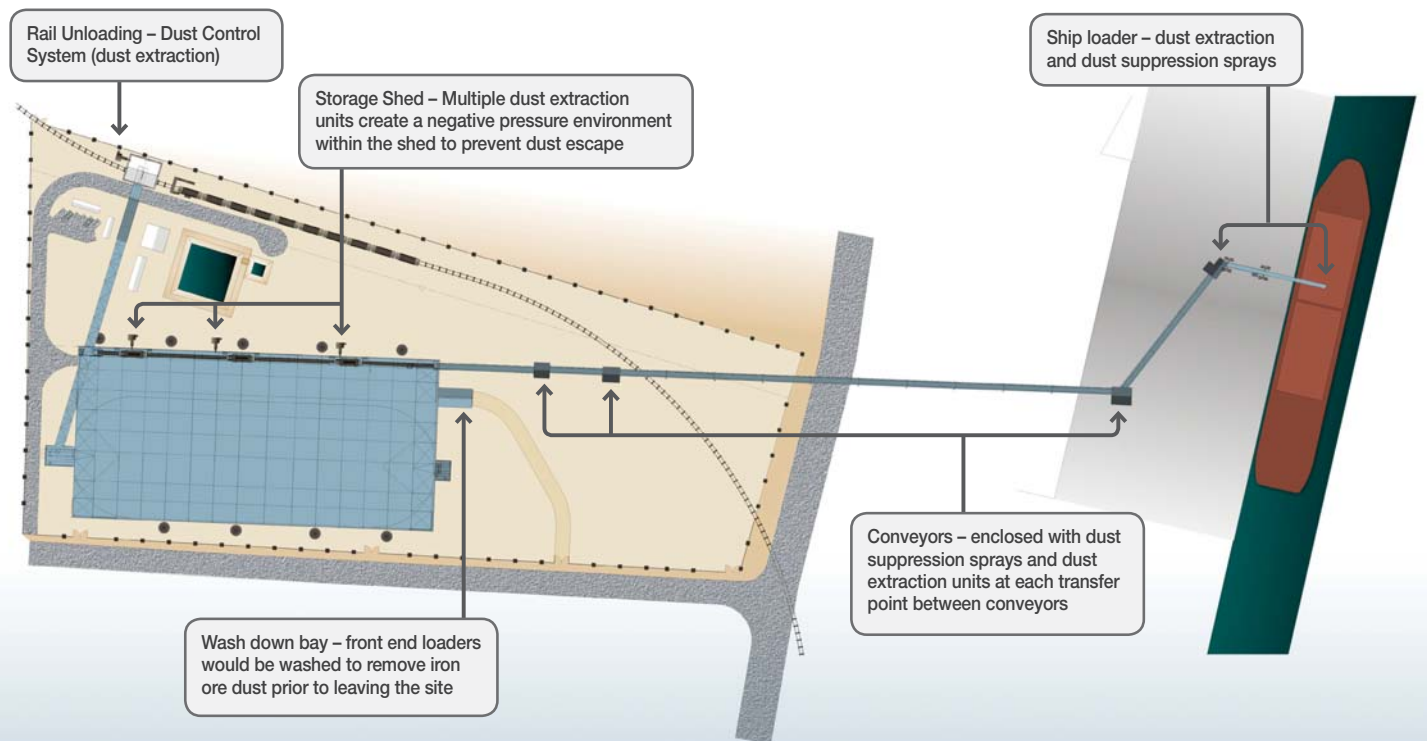


WESTERN PLAINS RESOURCES PORT PIRIE INFRASTRUCTURE

DUST AND AIR QUALITY

In line with requirements set down by the Environment Protection Authority (EPA), studies are currently being undertaken to identify any potential issues.

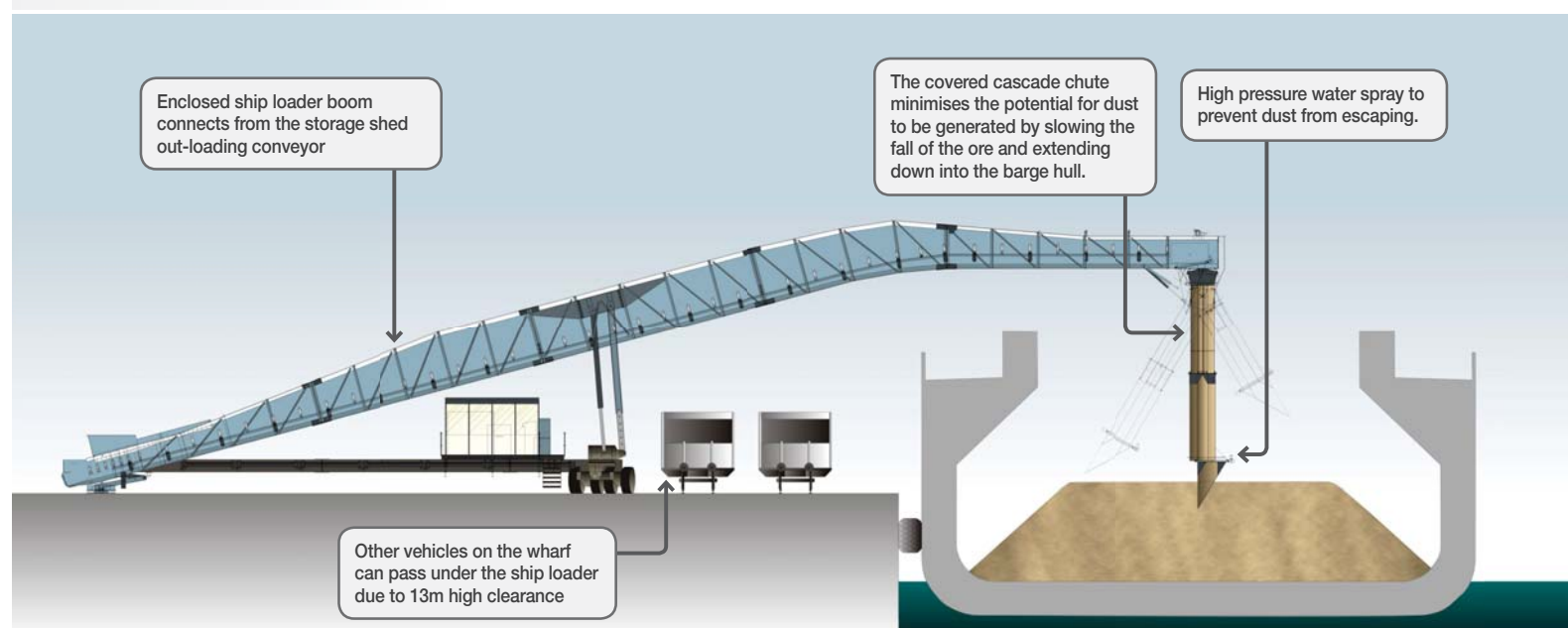
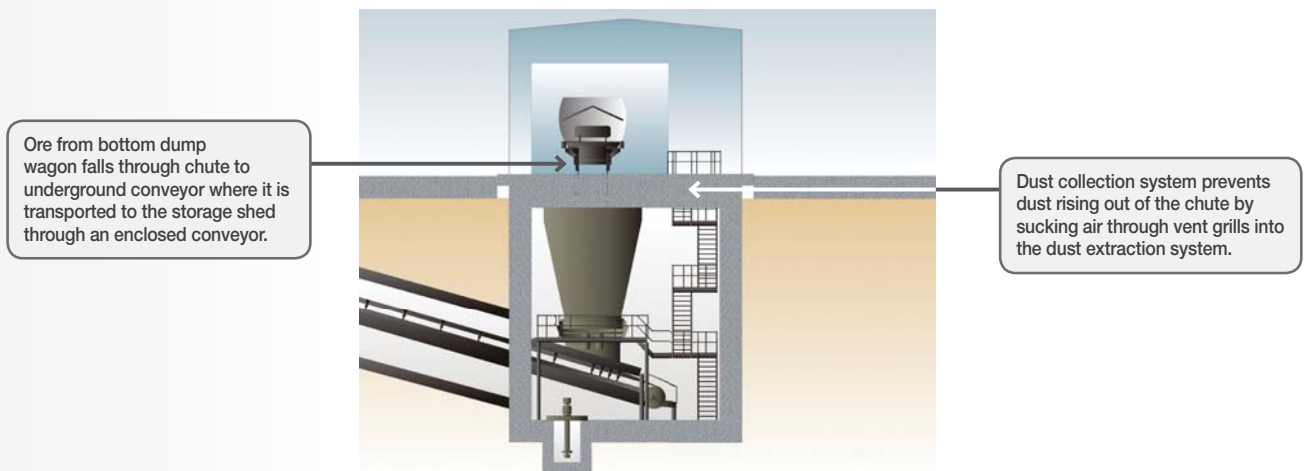
WPG will take every precaution to ensure stringent environmental standards are met in the design, construction and operation of the facilities.



WILL THERE BE ANY DUST FROM THE PROPOSED FACILITY?

Dust suppression measures will be taken at every step of the process to prevent dust from escaping into the surrounding environment. This is a key focus of the engineering design. All movement of the iron ore will occur within enclosed structures with fume and dust collection systems in place.

Air quality specialists are also reviewing the proposed design and will subsequently prepare appropriate environmental management plans.





WESTERN PLAINS RESOURCES PORT PIRIE INFRASTRUCTURE

ENVIRONMENT

Every precaution will be taken to ensure stringent environmental standards are met in the construction and operation of the facilities. Studies are currently being undertaken to understand any potential issues relating to noise, traffic, contaminated land, marine, water quality, flora and fauna and flooding. These studies will be conducted in line with the requirements of the Environment Protection Authority (EPA).

WILL THERE BE ANY NOISE IMPACTS?

There will be minimal noise associated with the proposed facility as unloading, storage and ship loading will all occur within enclosed structures.

A detailed noise assessment is being undertaken as part of the development approval.

HOW WILL THE PROPOSED FACILITY IMPACT ON TRAFFIC IN PORT PIRIE?

Six return train trips to Port Pirie will be scheduled weekly, requiring crossing of Ellen Street in order to access the port area.

To minimise impacts on local traffic, the 1800m long train will be broken into three trains of 600m, before these are shunted across Ellen Street through to the port to the facility.

MARINE ENVIRONMENT

Every precaution will be taken to ensure the marine environment is not impacted by the project.

A background study of marine ecology and marine water quality is being undertaken as part of the development approval process to identify and manage any environmental factors.

SOIL AND WATER QUALITY

A soil and water assessment is being undertaken to understand existing site contamination from previous uses and identify and manage impacts on future soil and water quality. Stringent environmental standards will be applied in the excavation, cartage and disposal of any contaminated soil that is extracted from the site.

WILL THERE BE ANY REMOVAL OF VEGETATION OR TREES?

Some of the planted vegetation on the site will be disturbed during construction of the ore storage facility. Appropriate revegetation and landscaping will be undertaken following construction.



ARTIST IMPRESSION – AERIAL VIEW OF THE SITE



LOOKING NORTH AT ELLEN STREET RAIL CROSSING



WESTERN PLAINS RESOURCES PORT PIRIE INFRASTRUCTURE

DEVELOPMENT ASSESSMENT

On behalf of Western Plains Resources, project delivery firm Sinclair Knight Merz are currently preparing a development application (DA) to address planning, community and environmental aspects of the proposed ore storage and mineral exporting facility at Port Pirie. The DA will be assessed by the Development Assessment Commission (DAC) under the Crown development and public infrastructure assessment process of the Development Act 1993. This process is explained in the diagram.

WHAT IS THE CROWN DEVELOPMENT AND PUBLIC INFRASTRUCTURE PROCESS?

The Crown development and public infrastructure assessment process is designed for assessing infrastructure projects that are currently, or traditionally, provided by the State. These include projects like energy supply, transport, hospitals and ports, wharfs and jetty infrastructure.

The proposed ore storage and mineral exporting facility is supported by the Department for Transport, Energy and Infrastructure to allow it to be assessed under the Crown development and public infrastructure process.

The assessment process is similar to the normal council assessment process in that it is rigorous and includes opportunity for public comment. One of the key differences is that the assessment process is managed by the Development Assessment Commission (DAC).

WHO IS THE DAC?

The DAC is an independent body with 7 members, established under the Development Act. The DAC assess public infrastructure applications and provide a report to the Minister for Urban Development and Planning to make the decision.

